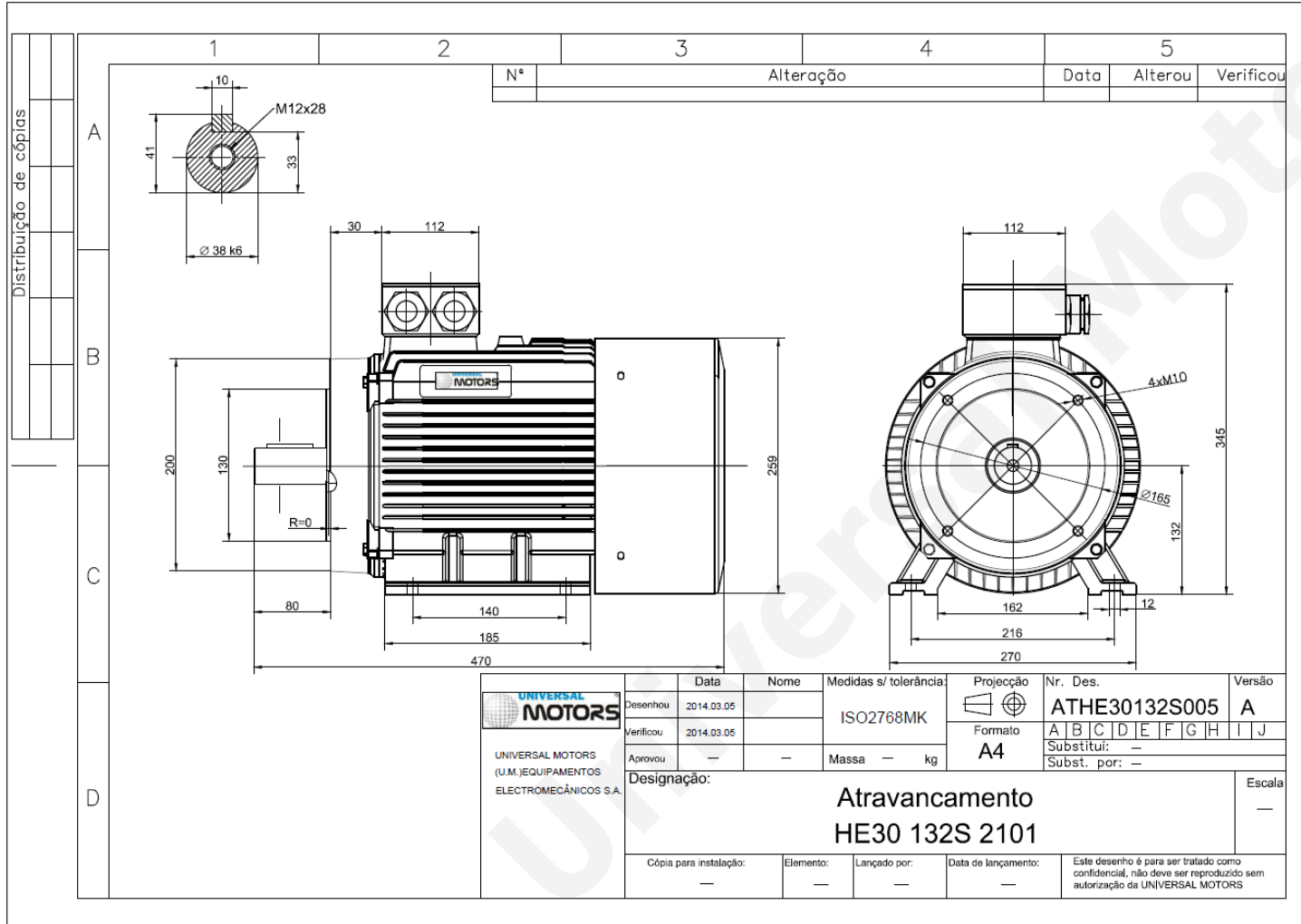




TECHNICAL DATA

Three Phase Electric Motors - Cast Iron Frame
 HE30 132 S1 2 IE2
 5.5 kW / 7.5 Cv
 2910 RPM



Motor type: **HE30 132 S1 2 IE2**
 Output: **5.5 kW / 7.5 Cv**
 Speed (min⁻¹): **2910 RPM**
 Frequency: **50 Hz**
 Voltage: **400 V**
 Current: **10.4 A**
 Power factor (Cos Ø): **0.88**
 Poles: **2**
 Insulation class: **F**
 Temperature rise Class: **B**
 Efficiency 50%: **86.0 %**
 Efficiency 75%: **88.0 %**
 Efficiency 100%: **87.0 %**
 Torque: **18 N.m**
 Tstarting/Tnominal: **2.2**
 Istarting/Inominal: **8.0**
 Tmaximum/Tnominal: **2.3**
 Noise: **69 Db(A)**
 Weight: **71 Kg**
 Bearing DE: **6308 2Z C3**
 Bearing NDE: **6308 2Z C3**

Regime - S1

Altitude - 1000m

Environment Temperature - 40°C

CONTACTS:

UNIVERSAL MOTORS Tel: +351 252 299 080
 Rua de São Brás,745 Fax: +351 252 299 089
 4480-782 VILA DO CONDE Mail: geral@universalmotors.pt

* References applied only in the UK